

A PART OF BAY WINDS, PLANNED UNIT DEVELOPMENT
BOCA WINDS - PARCEL D-1

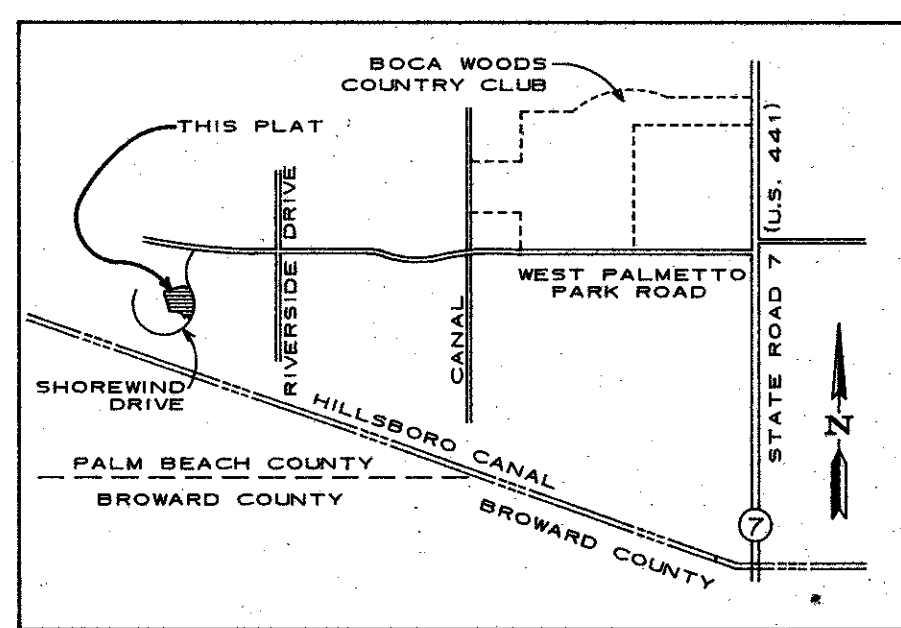
LYING IN SECTION 27, TOWNSHIP 47 SOUTH, RANGE 41 EAST

BEING A REPLAT OF A PORTION OF TRACTS 5, 6, 7, 9, 10, 11, AND 12 OF FLORIDA FRUITLANDS COMPANY'S SUBDIVISION NO. 2, P.B. 1, PG. 102,
MAY 1988

THIS INSTRUMENT WAS PREPARED BY MAYNARD H. THOMPSON, P.L.S.
IN AND FOR THE OFFICES OF CONSUL-TECH ENGINEERING, INC.
3661 W. OAKLAND PARK BLVD., SUITE 308
FORT LAUDERDALE, FLORIDA 33311
SHEET 1 OF 5

60

STATE OF FLORIDA SS
COUNTY OF PALM BEACH SS
THIS PLAT WAS FILED FOR RECORD
AT 9:29 AM, THIS 6 DAY
OF July, A.D. 1988, AND
DULY RECORDED IN PLAT BOOK
60 ON PAGES 60 THRU 64.
JOHN B. DUNKLE,
CLERK OF THE CIRCUIT COURT
BY: *John B. Dunkle*
D.C.



AREA TABULATION

ROADS	5.10 ACRES
TRACT 'L-1'	4.67 ACRES
TRACT 'L-2'	10.53 ACRES
TRACT 'G-1'	0.04 ACRES
TRACT 'G-2'	0.54 ACRES
TRACT 'G-3'	0.06 ACRES
TRACT 'G-4'	0.02 ACRES
TRACT 'G-5'	0.02 ACRES
TRACT 'G-6'	0.03 ACRES
REC. AREA	1.15 ACRES
LOTS -80-	19.13 ACRES
TOTAL	41.29 ACRES

DEDICATION:

STATE OF FLORIDA SS
COUNTY OF PALM BEACH SS

KNOW ALL MEN BY THESE PRESENTS THAT BW2 ASSOCIATES, A FLORIDA GENERAL PARTNERSHIP, FOGLIA CONSTRUCTION CO., INC., A FLORIDA CORPORATION, DUPREE GENERAL CONTRACTORS, INC., A FLORIDA CORPORATION AND QUESTMARK HOMES AT CRANBROOK, LTD., A FLORIDA LIMITED PARTNERSHIP OWNERS OF THE LAND SHOWN HEREON AS "BOCA WINDS - PARCEL D-1", LYING IN SECTION 27, TOWNSHIP 47 SOUTH, RANGE 41 EAST, SAID LANDS BEING A REPLAT OF A PART OF TRACTS 5, 6, 7, 9, 10, 11 AND 12, "FLORIDA FRUITLANDS COMPANY'S SUBDIVISION NO. 2", ACCORDING TO THE PLAT THEREOF, AS RECORDED IN PLAT BOOK 1, PAGE 102, PUBLIC RECORDS, PALM BEACH COUNTY, FLORIDA, AND BEING MORE PARTICULARLY DESCRIBED AS FOLLOWS:
BEGINNING AT THE INTERSECTION OF THE MOST SOUTHEASTELY CORNER OF TRACT "R" AND THE WEST RIGHT-OF-WAY LINE OF SHOREWIND DRIVE, AS SHOWN ON "BOCA WINDS-PARCEL D-1", ACCORDING TO THE PLAT THEREOF, AS RECORDED IN PLAT BOOK 55, PAGES 6 THRU 8, INCLUSIVE, SAID PUBLIC RECORDS OF PALM BEACH COUNTY, SAID POINT ON A CURVE CONCAVE TO THE NORTHWEST, HAVING A RADIAL BEARING OF NORTH 76°02'48" EAST, A RADIUS OF 1247.00 FEET AND A CENTRAL ANGLE OF 80°53'30"; THENCE SOUTHERLY AND WESTERLY ALONG SAID RIGHT-OF-WAY LINE OF SHOREWIND DRIVE, AN ARC DISTANCE OF 1760.55 FEET; THENCE NORTH 19°28'09" EAST, A DISTANCE OF 36.86 FEET; THENCE NORTH 28°00'00" WEST, A DISTANCE OF 144.40 FEET; THENCE NORTH 69°37'19" WEST, A DISTANCE OF 33.21 FEET TO A POINT ON A CIRCULAR CURVE CONCAVE TO THE NORTHWEST, HAVING A RADIAL BEARING OF NORTH 21°43'37" WEST, A RADIUS OF 400.00 FEET AND A CENTRAL ANGLE OF 17°48'14"; THENCE SOUTHWESTERLY AN ARC DISTANCE OF 124.29 FEET; THENCE NORTH 00°00'00" EAST, A DISTANCE OF 124.28 FEET TO A POINT OF CURVATURE OF A CIRCULAR CURVE CONCAVE TO THE SOUTHWEST, HAVING A RADIUS OF 3200.00 FEET AND A CENTRAL ANGLE OF 56°00'00"; THENCE NORTHWESTERLY AN ARC DISTANCE OF 312.76 FEET TO A POINT OF TANGENCY; THENCE NORTH 58°00'00" WEST, A DISTANCE OF 301.26 FEET TO A POINT ON A CIRCULAR CURVE, CONCAVE TO THE SOUTHWEST, HAVING A RADIAL BEARING OF SOUTH 65°28'00" WEST, A RADIUS OF 170.00 FEET AND A CENTRAL ANGLE OF 54°43'10"; THENCE NORTHWESTERLY AN ARC DISTANCE OF 162.36 FEET; THENCE NORTH 09°13'03" EAST, A DISTANCE OF 104.14 FEET; THENCE SOUTH 8°34'53" EAST, A DISTANCE OF 90.88 FEET; THENCE SOUTH 28°04'31" EAST, A DISTANCE OF 12.00 FEET TO A POINT ON A CIRCULAR CURVE, CONCAVE TO THE SOUTHWEST, HAVING A RADIAL BEARING OF NORTH 28°00'00" WEST, A RADIUS OF 158.00 FEET AND A CENTRAL ANGLE OF 12°02'29"; THENCE EASTERLY AND SOUTHERLY AN ARC DISTANCE OF 331.03 FEET TO A POINT OF TANGENCY; THENCE SOUTH 0°57'58" WEST, A DISTANCE OF 60.48 FEET; THENCE NORTH 81°57'58" EAST, A DISTANCE OF 139.91 FEET TO THE POINT OF BEGINNING.
SAID LANDS LYING AND BEING IN PALM BEACH COUNTY, FLORIDA, AND CONTAINING MORE OR LESS, 41.29 ACRES, MORE OR LESS.

ACKNOWLEDGEMENT:

STATE OF FLORIDA SS
COUNTY OF PALM BEACH SS
BEFORE ME PERSONALLY APPEARED ROY F. KRAG AND CHARLOTTE L. GRANTHAM, TO ME WELL KNOWN AND KNOWN TO ME TO BE THE INDIVIDUALS DESCRIBED IN AND WHO EXECUTED THE FOREGOING INSTRUMENT AS PRESIDENT AND SECRETARY, RESPECTIVELY, OF SHOREWIND CORPORATION, A FLORIDA CORPORATION, WHICH IS THE MANAGING PARTNER OF BW2 ASSOCIATES, A FLORIDA GENERAL PARTNERSHIP, AND SEVERALLY ACKNOWLEDGED TO AND BEFORE ME THAT THEY EXECUTED SAID INSTRUMENT AS SUCH OFFICERS OF SAID CORPORATION IN ITS CAPACITY AS MANAGING PARTNER OF, AND ON BEHALF OF, SAID PARTNERSHIP, AND THAT THE SEAL AFFIXED HERETO IS THE CORPORATE SEAL OF SAID CORPORATION AND THAT IT WAS AFFIXED HERETO BY DUE AND REGULAR CORPORATE AUTHORITY, AND THAT SAID INSTRUMENT IS THE FREE ACT AND DEED OF SAID CORPORATION, WITH DUE AUTHORIZATION OF ALL THE PARTNERS AS THE FREE ACT AND DEED OF SAID PARTNERSHIP.

WITNESS MY HAND AND OFFICIAL SEAL
THIS 12th DAY OF May, A.D. 1988
MY COMMISSION EXPIRES: SEP 22 1991
BY: *Janette Nottingham*
NOTARY PUBLIC, STATE OF FLORIDA

DEDICATION, CONTINUED:

IN WITNESS WHEREOF, FOGLIA CONSTRUCTION CO., INC., A FLORIDA CORPORATION, HAS CAUSED THESE PRESENTS TO BE SIGNED BY ITS PRESIDENT, IN THE PRESENCE OF TWO WITNESSES AND ITS CORPORATE SEAL TO BE AFFIXED HERETO BY AND WITH THE AUTHORITY OF ITS BOARD OF DIRECTORS.
THIS 13th DAY OF MAY, A.D. 1988.

WITNESS: *Joseph J. Foglia*
BY: *Joseph J. Foglia*
JOSEPH J. FOGLIA, PRESIDENT
ACKNOWLEDGEMENT:
STATE OF FLORIDA SS
COUNTY OF PALM BEACH SS

BEFORE ME PERSONALLY APPEARED JOSEPH J. FOGLIA TO ME WELL KNOWN, AND KNOWN TO ME TO BE THE INDIVIDUAL DESCRIBED IN AND WHO EXECUTED THE FOREGOING INSTRUMENT AS PRESIDENT OF FOGLIA CONSTRUCTION CO., INC., A FLORIDA CORPORATION, AND ACKNOWLEDGED TO AND BEFORE ME THAT HE EXECUTED SAID INSTRUMENT AS SUCH OFFICER OF SAID CORPORATION, AND THAT THE SEAL AFFIXED TO THE FOREGOING INSTRUMENT IS THE CORPORATE SEAL OF SAID CORPORATION AND THAT IT WAS AFFIXED TO SAID INSTRUMENT BY DUE AND REGULAR CORPORATE AUTHORITY AND THAT SAID INSTRUMENT IS THE FREE ACT AND DEED OF SAID CORPORATION.
WITNESS MY HAND AND OFFICIAL SEAL
THIS 12th DAY OF May, A.D. 1988.
MY COMMISSION EXPIRES: SEP 22 1991
BY: *Janette Nottingham*
NOTARY PUBLIC, STATE OF FLORIDA

BEFORE ME PERSONALLY APPEARED JOSEPH J. FOGLIA TO ME WELL KNOWN, AND KNOWN TO ME TO BE THE INDIVIDUAL DESCRIBED IN AND WHO EXECUTED THE FOREGOING INSTRUMENT AS PRESIDENT OF FOGLIA CONSTRUCTION CO., INC., A FLORIDA CORPORATION, AND ACKNOWLEDGED TO AND BEFORE ME THAT HE EXECUTED SAID INSTRUMENT AS SUCH OFFICER OF SAID CORPORATION, AND THAT THE SEAL AFFIXED TO THE FOREGOING INSTRUMENT IS THE CORPORATE SEAL OF SAID CORPORATION AND THAT IT WAS AFFIXED TO SAID INSTRUMENT BY DUE AND REGULAR CORPORATE AUTHORITY AND THAT SAID INSTRUMENT IS THE FREE ACT AND DEED OF SAID CORPORATION.
WITNESS MY HAND AND OFFICIAL SEAL
THIS 12th DAY OF May, A.D. 1988.
MY COMMISSION EXPIRES: SEP 22 1991
BY: *Janette Nottingham*
NOTARY PUBLIC, STATE OF FLORIDA

DEDICATION, CONTINUED:

IN WITNESS WHEREOF, DUPREE GENERAL CONTRACTORS, INC., A FLORIDA CORPORATION, HAS CAUSED THESE PRESENTS TO BE SIGNED BY ITS PRESIDENT, IN THE PRESENCE OF TWO WITNESSES AND ITS CORPORATE SEAL TO BE AFFIXED HERETO BY AND WITH THE AUTHORITY OF ITS BOARD OF DIRECTORS.
THIS 12th DAY OF MAY, A.D. 1988.

WITNESS: *G. Neil Dupree*
BY: *G. Neil Dupree*
G. NEIL DUPREE, PRESIDENT
ACKNOWLEDGEMENT:
STATE OF FLORIDA SS
COUNTY OF PALM BEACH SS

BEFORE ME PERSONALLY APPEARED G. NEIL DUPREE TO ME WELL KNOWN, AND KNOWN TO ME TO BE THE INDIVIDUAL DESCRIBED IN AND WHO EXECUTED THE FOREGOING INSTRUMENT AS PRESIDENT OF DUPREE GENERAL CONTRACTORS, INC., A FLORIDA CORPORATION, AND ACKNOWLEDGED TO AND BEFORE ME THAT THEY EXECUTED SAID INSTRUMENT AS SUCH OFFICER OF SAID CORPORATION, AND THAT THE SEAL AFFIXED TO THE FOREGOING INSTRUMENT IS THE CORPORATE SEAL OF SAID CORPORATION AND THAT IT WAS AFFIXED TO SAID INSTRUMENT BY DUE AND REGULAR CORPORATE AUTHORITY AND THAT SAID INSTRUMENT IS THE FREE ACT AND DEED OF SAID CORPORATION.
WITNESS MY HAND AND OFFICIAL SEAL
THIS 12th DAY OF MAY, A.D. 1988.
MY COMMISSION EXPIRES: SEP 22 1991
BY: *Janette Nottingham*
NOTARY PUBLIC, STATE OF FLORIDA

BEFORE ME PERSONALLY APPEARED G. NEIL DUPREE TO ME WELL KNOWN, AND KNOWN TO ME TO BE THE INDIVIDUAL DESCRIBED IN AND WHO EXECUTED THE FOREGOING INSTRUMENT AS PRESIDENT OF DUPREE GENERAL CONTRACTORS, INC., A FLORIDA CORPORATION, AND ACKNOWLEDGED TO AND BEFORE ME THAT THEY EXECUTED SAID INSTRUMENT AS SUCH OFFICER OF SAID CORPORATION, AND THAT THE SEAL AFFIXED TO THE FOREGOING INSTRUMENT IS THE CORPORATE SEAL OF SAID CORPORATION AND THAT IT WAS AFFIXED TO SAID INSTRUMENT BY DUE AND REGULAR CORPORATE AUTHORITY AND THAT SAID INSTRUMENT IS THE FREE ACT AND DEED OF SAID CORPORATION.
WITNESS MY HAND AND OFFICIAL SEAL
THIS 12th DAY OF MAY, A.D. 1988.
MY COMMISSION EXPIRES: SEP 22 1991
BY: *Janette Nottingham*
NOTARY PUBLIC, STATE OF FLORIDA

DEDICATION, CONTINUED:

IN WITNESS WHEREOF, QUESTMARK HOMES AT CRANBROOK, LTD., A FLORIDA LIMITED PARTNERSHIP, HAS CAUSED THESE PRESENTS TO BE SIGNED BY ITS GENERAL PARTNER, CRANBROOK BUILDERS, INC., A FLORIDA CORPORATION, WITH DUE AUTHORIZATION OF ALL THE PARTNERS, AND SAID CORPORATION, AS GENERAL PARTNER, HAS CAUSED THESE PRESENTS TO BE SIGNED BY ITS PRESIDENT, AND ATTESTED BY ITS SECRETARY, AND ITS CORPORATE SEAL TO BE AFFIXED HERETO BY AND WITH THE AUTHORITY OF ITS BOARD OF DIRECTORS.
THIS 12th DAY OF May, A.D. 1988.

QUESTMARK HOMES AT CRANBROOK, LTD. BY: CRANBROOK BUILDERS, INC.
A FLORIDA LIMITED PARTNERSHIP BY: A FLORIDA CORPORATION
GENERAL PARTNER
ATTEST: *Charlotte L. Grantham* BY: *Roy F. Krag*
CHARLOTTE L. GRANTHAM, SECRETARY ROY F. KRAG, PRESIDENT

HAS CAUSED THE SAME, TO BE SURVEYED AND PLATTED, AND DOES HEREBY MAKE THE FOLLOWING DEDICATIONS AND RESERVATIONS:

1. THE STREETS, AS SHOWN HEREON, ARE HEREBY DEDICATED TO THE BOARD OF COUNTY COMMISSIONERS OF PALM BEACH COUNTY FOR THE PERPETUAL USE OF THE PUBLIC FOR PROPER PURPOSES.
2. TRACTS G-4, G-5 & G-6, (SIGNAGE EASEMENT) AS SHOWN HEREON, IS HEREBY DEDICATED TO THE MAINSTREET HOMEOWNERS ASSOC., INC., A FLORIDA NOT-FOR-PROFIT CORPORATION, FOR SIGNAGE PURPOSES AND IS THE PERPETUAL MAINTENANCE OBLIGATION OF SAID ASSOCIATION, ITS SUCCESSORS AND ASSIGNS WITHOUT RECOURSE TO PALM BEACH COUNTY.
3. TRACTS G-1, G-2 & G-3, (OPEN SPACE) AS SHOWN HEREON, IS HEREBY DEDICATED TO THE B.W. HOMEOWNERS ASSOCIATION, INC., A FLORIDA NOT-FOR-PROFIT CORPORATION, FOR OPEN SPACE PURPOSES, AND IS THE PERPETUAL MAINTENANCE OBLIGATION OF SAID ASSOCIATION, SUCCESSORS AND IT ASSIGNS, WITHOUT RECOURSE TO PALM BEACH COUNTY.
4. TRACT L-1 & L-2, (WATER MANAGEMENT AND DRAINAGE) AS SHOWN HEREON, IS HEREBY DEDICATED TO THE B. W. HOMEOWNERS ASSOCIATION, INC., A FLORIDA NOT-FOR-PROFIT CORPORATION, AS A WATER MANAGEMENT TRACT AND DRAINAGE EASEMENT, AND IS THE PERPETUAL MAINTENANCE OBLIGATION OF SAID ASSOCIATION, ITS SUCCESSORS AND ASSIGNS, WITHOUT RECOURSE TO PALM BEACH COUNTY.
5. THE 20 FOOT DRAINAGE MAINTENANCE EASEMENT AS SHOWN HEREON, IS HEREBY DEDICATED TO THE B. W. HOMEOWNERS ASSOCIATION, INC., A FLORIDA NOT-FOR-PROFIT CORPORATION, FOR MAINTENANCE PURPOSES, AND IS THE PERPETUAL MAINTENANCE OBLIGATION OF SAID ASSOCIATION, ITS SUCCESSORS AND ASSIGNS, WITHOUT RECOURSE TO PALM BEACH COUNTY.
6. THE UTILITY EASEMENTS, AS SHOWN HEREON, ARE HEREBY DEDICATED IN PERPETUITY FOR THE CONSTRUCTION AND MAINTENANCE OF UTILITY FACILITIES, INCLUDING CABLE TELEVISION.
7. THE 5 FOOT LIMITED ACCESS EASEMENT, AS SHOWN HEREON, IS HEREBY DEDICATED TO THE BOARD OF COUNTY COMMISSIONERS OF PALM BEACH COUNTY FOR THE PURPOSE OF CONTROL AND JURISDICTION OVER ACCESS RIGHTS.
8. THE DRAINAGE EASEMENTS, AS SHOWN HEREON, ARE HEREBY DEDICATED TO THE B. W. HOMEOWNERS ASSOCIATION, INC., A FLORIDA NOT-FOR-PROFIT CORPORATION, AND ARE THE PERPETUAL MAINTENANCE OBLIGATION OF SAID ASSOCIATION, ITS SUCCESSORS AND ASSIGNS, WITHOUT RECOURSE TO PALM BEACH COUNTY. PALM BEACH COUNTY, HAS THE RIGHT, BUT NOT THE OBLIGATION, TO MAINTAIN THOSE PORTIONS OF THE DRAINAGE SYSTEM WHICH DRAIN COUNTY MAINTAINED ROADS.
9. TRACT "R" (RECREATION TRACT) AS SHOWN HEREON, IS HEREBY DEDICATED TO MAINSTREET HOMEOWNERS ASSOCIATION INC., A FLORIDA NOT-FOR-PROFIT CORPORATION, AND IS THE PERPETUAL MAINTENANCE OBLIGATION OF SAID ASSOCIATION, ITS SUCCESSORS AND ASSIGNS, WITHOUT RECOURSE TO PALM BEACH COUNTY.
10. THE EIGHT FOOT BIKE PATH EASEMENT, AS SHOWN HEREON, IS HEREBY DEDICATED TO THE B. W. HOMEOWNERS ASSOCIATION, INC., A FLORIDA NOT-FOR-PROFIT CORPORATION, AND IS THE PERPETUAL MAINTENANCE OBLIGATION OF SAID ASSOCIATION, ITS SUCCESSORS AND ASSIGNS, WITHOUT RECOURSE TO PALM BEACH COUNTY.

IN WITNESS WHEREOF, BW2 ASSOCIATES, A FLORIDA GENERAL PARTNERSHIP, HAS CAUSED THESE PRESENTS TO BE SIGNED BY ITS MANAGING PARTNER, SHOREWIND CORPORATION, A FLORIDA CORPORATION, WITH DUE AUTHORIZATION OF ALL THE PARTNERS, AND SAID CORPORATION, AS MANAGING PARTNER, HAS CAUSED THESE PRESENTS TO BE SIGNED BY ITS PRESIDENT, AND ATTESTED BY ITS SECRETARY AND ITS CORPORATE SEAL TO BE AFFIXED HERETO BY AND WITH THE AUTHORITY OF ITS BOARD OF DIRECTORS, THIS 12th DAY OF May, A.D. 1988.

BW2 ASSOCIATES
A FLORIDA GENERAL PARTNERSHIP
BY: *Roy F. Krag*
SHOREWIND CORPORATION
A FLORIDA CORPORATION
MANAGING PARTNER
ATTEST: *Charlotte L. Grantham* BY: *Roy F. Krag*
CHARLOTTE L. GRANTHAM, SECRETARY ROY F. KRAG, PRESIDENT

ACKNOWLEDGEMENT:

STATE OF FLORIDA SS
COUNTY OF PALM BEACH SS
BEFORE ME PERSONALLY APPEARED ROY F. KRAG AND CHARLOTTE L. GRANTHAM, TO ME WELL KNOWN, AND KNOWN TO ME TO BE THE INDIVIDUALS DESCRIBED IN AND WHO EXECUTED THE FOREGOING INSTRUMENT AS PRESIDENT AND SECRETARY, RESPECTIVELY, OF CRANBROOK BUILDERS, INC., A FLORIDA CORPORATION, WHICH IS THE GENERAL PARTNER OF QUESTMARK HOMES AT CRANBROOK, LTD., A FLORIDA LIMITED PARTNERSHIP, AND SEVERALLY ACKNOWLEDGED TO AND BEFORE ME THAT THEY EXECUTED SAID INSTRUMENT AS SUCH OFFICERS OF SAID CORPORATION IN ITS CAPACITY AS GENERAL PARTNER OF, AND ON BEHALF OF, SAID PARTNERSHIP, AND THAT THE SEAL AFFIXED TO THE FOREGOING INSTRUMENT IS THE CORPORATE SEAL OF SAID CORPORATION AND THAT IT WAS AFFIXED TO SAID INSTRUMENT BY DUE AND REGULAR CORPORATE AUTHORITY AND THAT SAID INSTRUMENT IS THE FREE ACT AND DEED OF SAID CORPORATION, WITH DUE AUTHORIZATION OF ALL THE PARTNERS AS THE FREE ACT AND DEED OF SAID PARTNERSHIP.
WITNESS MY HAND AND OFFICIAL SEAL
THIS 12th DAY OF May, A.D. 1988.
MY COMMISSION EXPIRES: SEP 22 1991
BY: *Janette Nottingham*
NOTARY PUBLIC, STATE OF FLORIDA

BEFORE ME PERSONALLY APPEARED ROY F. KRAG AND CHARLOTTE L. GRANTHAM, TO ME WELL KNOWN, AND KNOWN TO ME TO BE THE INDIVIDUALS DESCRIBED IN AND WHO EXECUTED THE FOREGOING INSTRUMENT AS PRESIDENT AND SECRETARY, RESPECTIVELY, OF CRANBROOK BUILDERS, INC., A FLORIDA CORPORATION, WHICH IS THE GENERAL PARTNER OF QUESTMARK HOMES AT CRANBROOK, LTD., A FLORIDA LIMITED PARTNERSHIP, AND SEVERALLY ACKNOWLEDGED TO AND BEFORE ME THAT THEY EXECUTED SAID INSTRUMENT AS SUCH OFFICERS OF SAID CORPORATION IN ITS CAPACITY AS GENERAL PARTNER OF, AND ON BEHALF OF, SAID PARTNERSHIP, AND THAT THE SEAL AFFIXED TO THE FOREGOING INSTRUMENT IS THE CORPORATE SEAL OF SAID CORPORATION AND THAT IT WAS AFFIXED TO SAID INSTRUMENT BY DUE AND REGULAR CORPORATE AUTHORITY AND THAT SAID INSTRUMENT IS THE FREE ACT AND DEED OF SAID CORPORATION, WITH DUE AUTHORIZATION OF ALL THE PARTNERS AS THE FREE ACT AND DEED OF SAID PARTNERSHIP.
WITNESS MY HAND AND OFFICIAL SEAL
THIS 12th DAY OF May, A.D. 1988.
MY COMMISSION EXPIRES: SEP 22 1991
BY: *Janette Nottingham*
NOTARY PUBLIC, STATE OF FLORIDA

APPROVALS:

BOARD OF COUNTY COMMISSIONERS
PALM BEACH COUNTY, FLORIDA
THIS PLAT IS HEREBY APPROVED FOR RECORD THIS 5 DAY OF July, A.D. 1988.
BY: *Carol A. Roberts*
CAROL A. ROBERTS, CHAIR
BOARD OF COUNTY COMMISSIONERS
PALM BEACH COUNTY, FLORIDA

ATTEST:

JOHN B. DUNKLE, CLERK
BOARD OF COUNTY COMMISSIONERS
BY: *Elizabeth Rebeck* D.C.

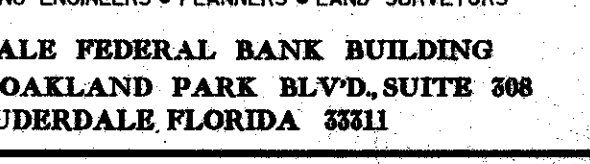
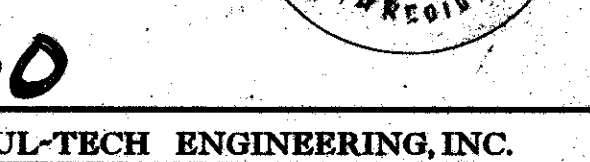
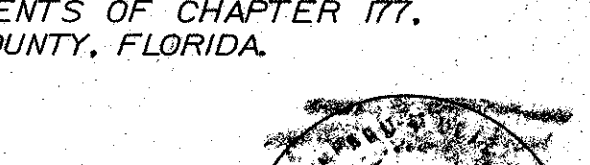
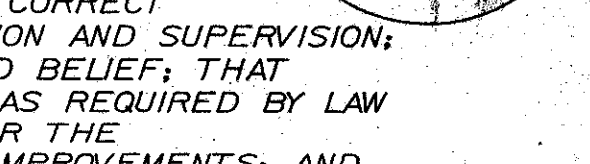
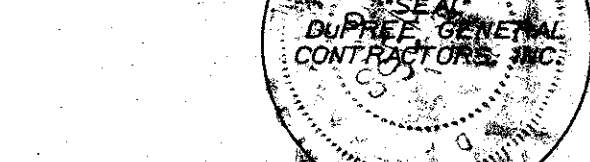
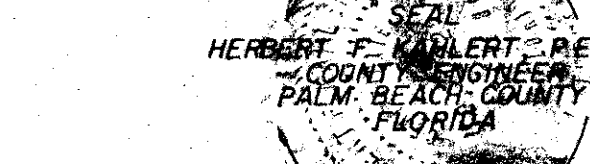
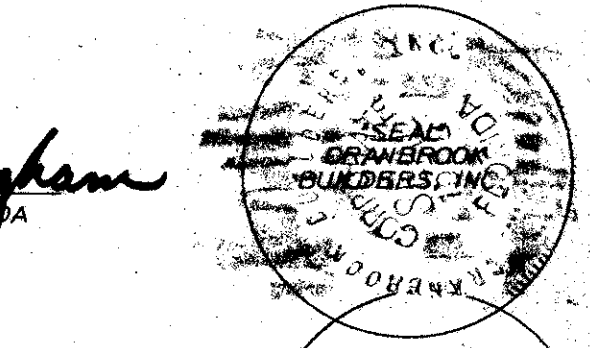
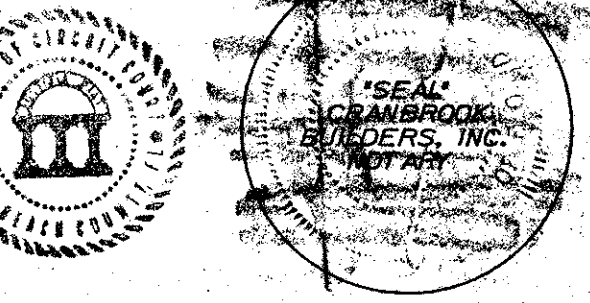
COUNTY ENGINEER:

THIS PLAT, IS HEREBY APPROVED FOR RECORD THIS 5 DAY OF July, A.D. 1988.
BY: *Herbert F. Kahler*
HERBERT F. KAHLERT, P.E.
PALM BEACH COUNTY, FLORIDA

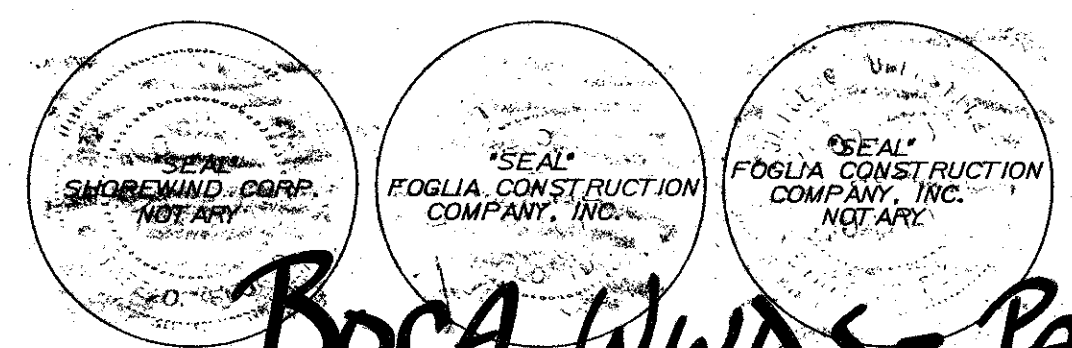
SURVEYOR'S CERTIFICATION:

STATE OF FLORIDA SS
COUNTY OF PALM BEACH SS
THIS IS TO CERTIFY, THAT THE PLAT SHOWN HEREON IS A TRUE, AND CORRECT REPRESENTATION OF A SURVEY MADE UNDER MY RESPONSIBLE DIRECTION AND SUPERVISION; THAT SAID SURVEY IS ACCURATE TO THE BEST OF MY KNOWLEDGE AND BELIEF; THAT (P. R. M. 'S) PERMANENT REFERENCE MONUMENTS HAVE BEEN PLACED AS REQUIRED BY LAW AND THAT (P. C. P. 'S) PERMANENT CONTROL POINTS WILL BE SET UNDER THE GUARANTEES POSTED WITH PALM BEACH COUNTY FOR THE REQUIRED IMPROVEMENTS; AND FURTHER THAT THE SURVEY DATA COMPLIES WITH ALL THE REQUIREMENTS OF CHAPTER 177, FLORIDA STATUTES, AS AMENDED, AND ORDINANCES OF PALM BEACH COUNTY, FLORIDA.
DATED: THIS 16 DAY OF MAY, A. D. 1988

BY: *Maynard H. Thompson*
MAYNARD H. THOMPSON, P. L. S.
FLORIDA REGISTRATION NO. 3654
TURNOUT REQUIRED



Subdivision - Boca Winds # D-1
BOOK 55 PAGE 60
FLOOR PLAN NO. 110B
QUAD 69
SE
PUD NAME Boca Winds PUD
ZONING
ZUP CODE 33433



BOCA WINDS - PARCEL D-1

CONSUL-TECH ENGINEERING, INC.
CONSULTING ENGINEERS • PLANNERS • LAND SURVEYORS
GLENDALE FEDERAL BANK BUILDING
3661 W. OAKLAND PARK BLVD., SUITE 308
FT. LAUDERDALE, FLORIDA 33311